



Platinum Sash Window Collection





About Sash Windows

Stylish, secure and energy efficient vertical sliders to suit almost every type of home

Vertical sliders are a traditional style of window. Commonly found in older properties, they are usually manufactured from timber. This elegant type of window is a popular replacement in period houses, its design giving your home a sophisticated charm and style that you won't achieve from a standard casement window. Real timber windows can be expensive so homeowners look to more affordable solutions such as PVC-U.

PVC-U sash windows are thermally efficient and environmentally friendly which mimic the charm of a classic timber vertical slider, but have all the benefits of a modern PVC-U system, giving you the best of both worlds.

Whether you live in an older property or a more modern home, PVC-U sash windows are a cost-effective solution for replacing like for like replacement or as an alternative to other styles. We can even install splay and 90° bay styles.

Choose from a range of colour and hardware options to complete your window and create a look that fits in perfectly with your home.

PVC-U sash windows will enhance your home and reduce your heating bills...saving you money

Enjoy a warm and comfortable home with the benefit of low maintenance



Sliding Function

PVC-U sash windows primarily function like a wooden box sash window with both the top and bottom sashes sliding up and down to suit your ventilation requirements.

Convenient and simple to operate, the two sliding sashes within an outer frame work independently of each other on a balanced load mechanism, designed to hold the sash at any height.



Attention to Detail

It's the little details that help make sash windows as authentic as possible. Our PVC-U windows are designed to be smooth and sleek with slim profile sections giving a better appearance, which is pleasing to the eye as well as offering improved views from the inside and outside.

To complete the timber-like appearance, our windows incorporate the same stylish features found on original timber sash windows such as astragal bars (optional extras) and traditional-style operating hardware. The jambs, sash sections and meeting rail are all engineered to look just like a timber sash window, giving you truly authentic looking new windows.

Tilt & Easy Clean Function

PVC-U sash windows are incredibly low maintenance, requiring only a quick wipe down with a damp cloth to keep them looking as good as new.

The window sashes feature an inward opening tilt facility to allow easy and safe cleaning of the outside frame and glass from inside your home. This is particularly useful for second storey windows or windows positioned in a hard to reach place, such as above a conservatory.



Styles of Window

Appealing window installations

We offer a range of sash window styles to match your old windows as closely as possible and maintain the signature "design statement" for your home.

We can replace bay-style windows including splay and box bay windows. These are a common feature in older properties and when combined with a sliding sash window the installed appearance is very impressive.

We can also replace arched and swept head windows. These shaped styles are incredibly eye-catching. PVC-U sash windows are bespoke-manufactured to your exact requirements, to maintain the appealing charm of your home.

Other additional design options are available with internal Georgian Bar or external Astragal Bar detailing, to ensure your new windows are truly authentic in style.

*Windows
to suit from
traditional-style
through to
contemporary*



Colour & Foil Options

Find your ideal look with classic White, woodgrain foils or more contemporary colour options

Timber box sash windows were always painted and you can replicate this look with solid White and Cream colour options. If you want a more natural wood effect, our Crystal White, Cream, Golden Oak and Irish Oak foils give a realistic woodgrain appearance that mimics the grained texture and appearance of an original timber window.

We also offer colour outside / White inside options in Chartwell Green, Anthracite Grey, Rosewood, Black Brown, Cream, Golden Oak and Irish Oak. With this option you can have the external colour you like, whilst maintaining a White interior to better suit your home's decoration.

Profile Colour



White

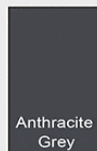
Foil Inside and Outside Options



Crystal White



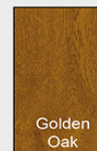
Cream



Anthracite Grey



Irish Oak

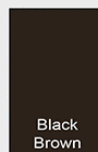


Golden Oak

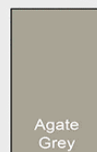
Foil Outside / White Inside Options



Chartwell Green



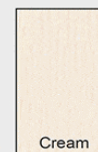
Black Brown



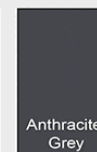
Agate Grey



Rosewood



Cream



Anthracite Grey



Golden Oak



Irish Oak

Colours shown are a guide and are only as accurate as the printing process allows

Colours shown are a guide and are only as accurate as the printing process allows

Glass Options



Contora™



Charcoal Sticks™



Minster™



Satin™



Stippolyte™

More options available upon request

Spraying Options

Spraying and colour matching



Our onsite paint shop enables your PVC-U sash windows to be spray painted to match virtually any RAL code or colour.

You can personalise your vertical sash windows and colour co-ordinate them to match your property or just to suit your own personal taste.

Our optional spray painted finish is applied to the highest standards and will provide a unique and colourful addition to your home.



Hardware and Security

Select your finishing touches from a variety of hardware

Add the finishing touches to your new windows with traditionally-styled vertical slider hardware. Pole eyes, tilt knobs, sash lifts, sash locks and travel restrictors are fitted as standard, but we can also offer D handles if needed. All hardware is available in Chrome, Gold, White, Black or Satin Chrome to complement our range of colours.

Other additional options are available such as Georgian or Astragal glazing bars and trickle vents, to give your new windows a truly authentic and classical vertical slider look.

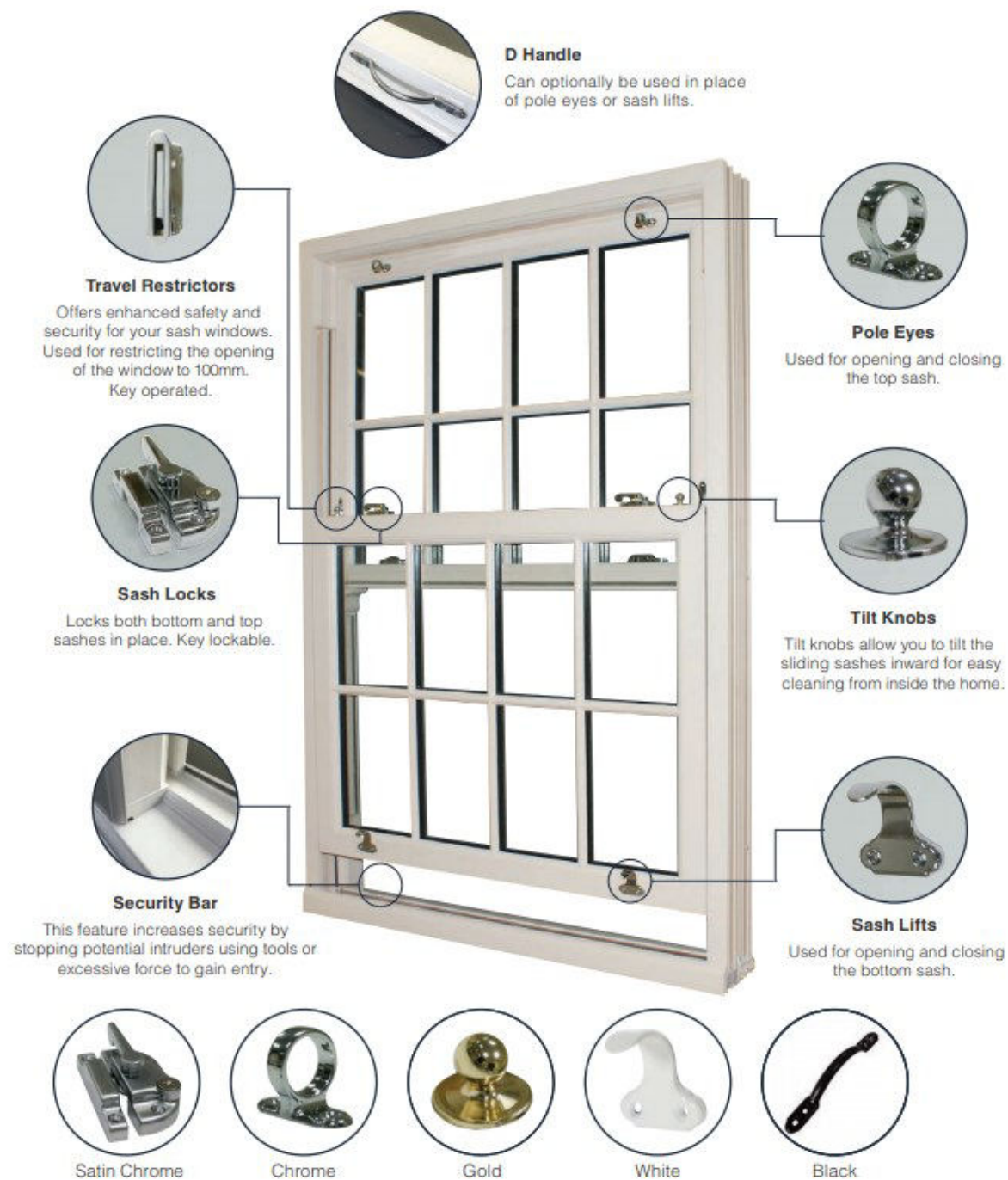
In addition to this, PVC-U sash windows are designed to be extremely safe and secure. High performance locking systems keep your home safe from potential intruders to give you extra peace of mind.

For added safety we also offer the option of a "Fire Egress" window design to provide emergency escape.

A wide choice
of decorative
window hardware
options

Travel
restrictors are
useful for increasing
levels of security
and safety

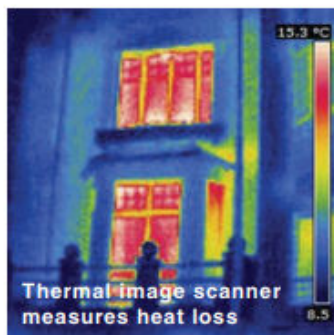




Energy Efficiency & Ratings

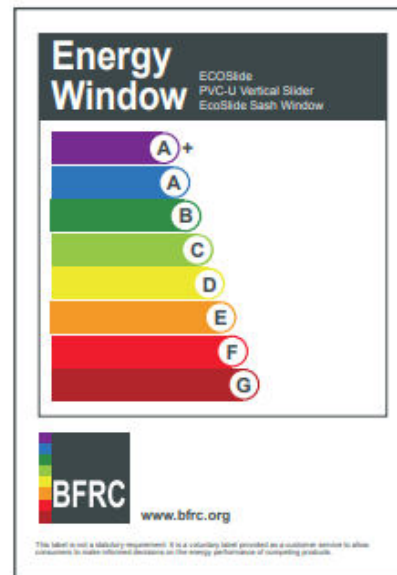
Enjoy a warmer, more comfortable home with energy efficient sash windows

Windows are given energy ratings based on their ability to insulate your home. These are displayed on a colour scale ranging from 'A+' (Purple) to 'G' (Burgundy), with 'G' being the least energy efficient and 'A' the most energy efficient.



Putting the style back into your home with will make your home a warmer and more comfortable place to live, saving on your energy bills year on year.

PVC-U sash windows are 'A' rated as standard.



www.diyssashwindowsdirect.co.uk

0800 002 9033 / 0330 111 9033

Casement & Tilt & Turn Windows, uPVC Front & Back Doors, French & Patio Doors, Composite Doors, uPVC & Aluminium Bifold Doors

www.diyupvcdoors.co.uk